



Parent Information Guide:

Understanding Relationships Education in Primary Schools in Jersey

We want all children to grow up healthy, happy and safe.

In primary schools, the Jersey Curriculum provides an entitlement for all children to access Personal, Social, Health and Economic education (PSHE). This is a developmental programme of learning through which children acquire the knowledge, understanding and skills they need to manage their lives now and in the future.

‘Relationships Education’ is one aspect of PSHE; the other core themes being ‘Health and Wellbeing’, and ‘Living in the Wider World’. The world is constantly changing and teachers take into account the context of relevant and current learning when they respond to the requirements of the curriculum.

In Jersey, head teachers and their staff use the knowledge of their school context to shape their PSHE curriculum so that it will match the needs of their pupils. For this reason, there are likely to be some variations in the approaches and resources used to deliver the curriculum, however this will relate directly back to the Jersey Curriculum programme of study that schools are required to cover.



Relationships Education

Relationships Education will put into place the building blocks needed for positive and safe relationships, including with family, friends and online.

Your child will be taught what a relationship is, what a friendship is, what family means and who can support them. In an age-appropriate way, your child's school will cover how to treat each other with kindness, consideration and respect. By the end of primary school, pupils will have been taught content on:

- How to develop and maintain a variety of healthy relationships, within a range of social/cultural contexts
- How to recognise and manage emotions within a range of relationships
- How to recognise risky or negative relationships, including all forms of bullying and abuse
- How to respond to risky or negative relationships and ask for help
- How to respect equality and diversity in relationships.

Involving Parents / Carers

Your child's school will do what they can to involve you in your child's PSHE curriculum. Parents and carers will always be the main source for developing personal and interpersonal skills for their child, so for the PSHE curriculum in particular, a joint approach is desirable.

Challenges sometimes exist when parents are not clear on the aims and content for the PSHE programme, perceiving it as perhaps intrusive, or tackling issues that they do not wish their child to learn about, such as Sex Education. It may be, for instance, that it is unclear how aspects of the curriculum can align with different faiths.

Concerns relating to this aspect of the curriculum can generally be overcome where schools and parents communicate well and work well together, so please talk to staff in your school to find out more about the approaches they are going to use.

Your Rights as a Parents / Carers

The important lessons that you teach your child as a parent / carer about healthy relationships, looking after themselves and staying safe are valued under the Jersey Curriculum. Teaching at school will complement and reinforce the lessons you teach your child as they grow up.

Your child's school will share information with you about how they will address the requirements of Relationships Education. Through this partnership, you should be well-informed of the age appropriate content and resources that are being used with your child. This information may be presented on the school website, in termly letters or through parent / teacher meetings. Some schools use commercial schemes to support them, for example 'Jigsaw', which they can share with you.

If you would like further information then please speak with your child's teacher or head teacher.



Respecting similarities and differences between people.

Families can be different

Year 1 and 2

How are we all equal?
Valuing uniqueness

Gender stereotypes and assumptions

A Sample Progression Strand (from Relationships Education):

Equality and Diversity

Respecting similarities and differences in relation to the 'Protected characteristics' under the Discrimination (Jersey) Law, 2013.

Recognise and challenge stereotypes.

Year 3 and 4

All families are special. Learning not to judge others.

Recognise and challenge stereotypes.

Realise the nature and consequences of discrimination, teasing, bullying and aggressive behaviours; how to respond / get help.

Year 5 and 6

Celebration of and respect for difference.

Discrimination / prejudice and the effect on others (wider approach, including cultural difference).



FAQs (Frequently Asked Questions)

Do parents/carers have a right to withdraw their child from Relationships Education?

No. Parents only have the right to withdraw their child from aspects of sex education that lie outside of the Science curriculum and they should discuss this with the head teacher first.

How will any difficult questions be answered in class?

Staff are aware that public views around Relationships Education and related issues are varied. The personal views of families will always be acknowledged. All Relationships Education lessons are taught without bias, using a variety of views and beliefs so that pupils will develop the ability to make their own opinions, whilst respecting the fact that others may have different opinions.

The developmental age of the child is taken into account. Responses to questions may be on a 1:1, small group or whole class basis. Teachers will set guidelines with the class for discussions before commencing their teaching.

Will the Jersey Curriculum be changed in line with the UK requirement for 2020?

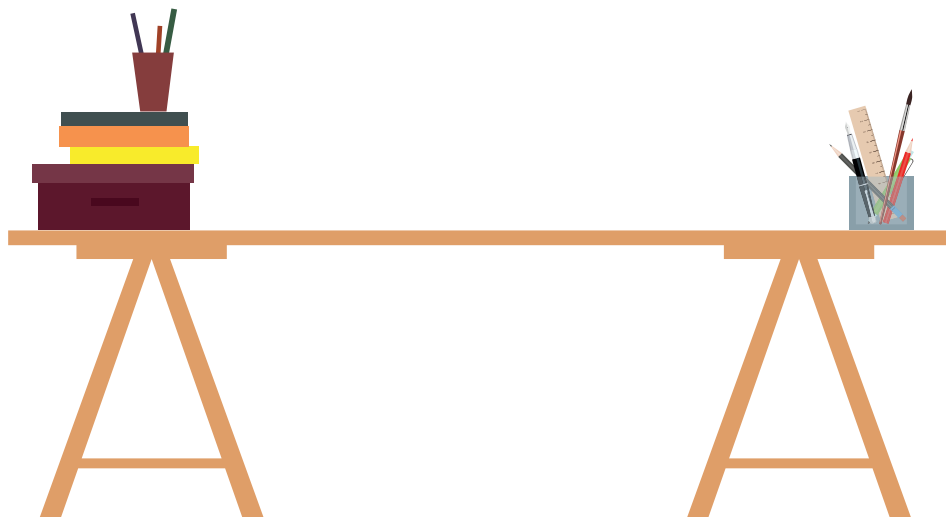
No. The PSHE curriculum in Jersey has been statutory since 2014/15. It already promotes an understanding of and respect for equality, diversity and inclusion.



The key aims of the Jersey Curriculum are focused on inclusion, self-worth, accurate information to help young people keep safe and to thrive as members of society, and to prevent bullying.

Will my child be explicitly taught about same sex relationships and LGBT?

A holistic approach is taken to approaching diversity, however during discussions the topics may sometimes arise from queries generated by pupils. A sample progression for an aspect of Relationships Education is outlined on the previous page. A reasonable and proportionate response to questions will be taken, based on accurate factual information, presented at an age-appropriate level (guided by the Jersey Curriculum). Teachers are professionals who follow the requirements of the curriculum, rather than sharing any personal views with their pupils.





Gouvernement
d'JÈRRI